

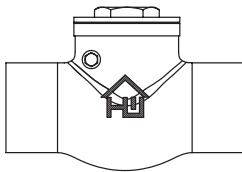
Specifications



Physical Characteristics

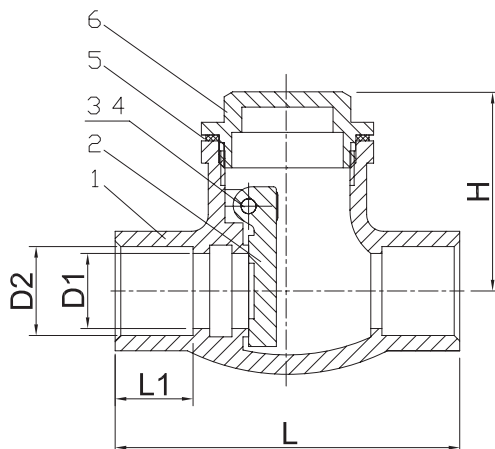
- Description: Swing Check Valve - Brass
- Connection Type: Solder x Solder
- Max. Operating Temp. Rating: 200° F
- Max. Operating Pressure Rating: 200 PSI non-shock WOG
- Meets ANSI/NSF 61 Low Lead Requirements

VSK-STD-A3PA
 VSK-STD-A4PA
 VSK-STD-A5PA
 VSK-STD-A6PA
 VSK-STD-A7PA
 VSK-STD-A8PA
 VSK-STD-A3B
 VSK-STD-A4B
 VSK-STD-A5B
 VSK-STD-A6B
 VSK-STD-A7B
 VSK-STD-A8B



PART NO.	SIZE	L		L1		D2		H		D1		WEIGHT g
		mm	In.	mm	In.	mm	In.	mm	In.	mm	In.	
VSK-STD-A3PA	1/2"	62	2.4	14	.55	15.93-16.03	0.627-0.631	38	1.5	13.5	0.5	189
VSK-STD-A4PA	3/4"	81	3.2	19	.75	22.28-22.38	0.878-0.882	41	1.6	18	0.7	293
VSK-STD-A4PA	1"	89	3.5	23	.91	28.65-28.75	1.128-1.132	44.5	1.7	23	0.9	415
VSK-STD-A6PA	1-1/4"	109	4.3	24.5	.96	35.0-35.1	1.378-1.382	53.5	2.1	31	1.2	652
VSK-STD-A7PA	1-1/2"	123	4.8	28.5	1.12	41.35-41.48	1.628-1.633	59	2.3	35	1.4	895
VSK-STD-A8PA	2"	141	5.6	34	1.34	54.05-54.18	2.128-2.133	70	2.7	45	1.8	1350

PART NO.	SIZE	L		L1		D2		H		D1		WEIGHT g
		mm	In.	mm	In.	mm	In.	mm	In.	mm	In.	
VSK-STD-A3B	1/2"	62	2.4	14	.55	15.93-16.03	0.627-0.631	38	1.5	13.5	0.5	189
VSK-STD-A4B	3/4"	81	3.2	19	.75	22.28-22.38	0.878-0.882	41	1.6	18	0.7	293
VSK-STD-A4B	1"	89	3.5	23	.91	28.65-28.75	1.128-1.132	44.5	1.7	23	0.9	415
VSK-STD-A6B	1-1/4"	109	4.3	24.5	.96	35.0-35.1	1.378-1.382	53.5	2.1	31	1.2	652
VSK-STD-A7B	1-1/2"	123	4.8	28.5	1.12	41.35-41.48	1.628-1.633	59	2.3	35	1.4	895
VSK-STD-A8B	2"	141	5.6	34	1.34	54.05-54.18	2.128-2.133	70	2.7	45	1.8	1350



NO.	DESCRIPTION	MATERIAL
1	Body	Brass
2	Disc	Brass
3	Rod	Brass
4	Screw	Brass
5	Washer	Teflon
6	Bonnet	Brass